

# Nazareth Catholic Primary School

## Enrolment Policy



Nazareth Catholic Primary School is a school which operates with the consent of the Catholic Archbishop of Melbourne and is owned, operated and governed by Melbourne Archdiocese Catholic Schools Ltd (MACS).

Nazareth Catholic Primary School is a MACS school in which:

- prayer and liturgy are vital aspects of religious life in the school
- the pastoral care and support programs for students, families and staff are based on the teachings of the Catholic Church
- the teachings and values of the Catholic Church are paramount.

## Principles

### Inclusiveness

MACS schools are established primarily for Catholic children. Nazareth strives to be open and welcoming to all Catholic students, regardless of their background, and does everything reasonable to accommodate each student's individual needs.

Nazareth is open to the enrolment of children of other Christian traditions and faiths, however, priority will be given to children from non-Catholic Eastern churches. Children from other religious traditions or of no religion are provided with an opportunity to enrol in Catholic schools, should they choose to apply and there is sufficient capacity within the school.

### Partnership between parents/guardians/carers and Nazareth Catholic Primary School

Parents/guardians/carers are the first educators of their children. By enrolling a child in Nazareth, parents/guardians/carers are entering into a partnership to promote and support their child's education, in particular their education in faith. While the school promotes access to a Catholic education through the school enrolment policy, it is the parent/guardian/carers' responsibility to support the school in furthering the spiritual and academic life of their child.

### Exercise of pastoral discretion in enrolment decisions

Local pastoral discretion is an important element of decision-making with regard to enrolment at Nazareth. While the first priority of the principal is to enrol the children of Catholic parents/guardians/carers, pastoral discretion may be exercised in enrolment decisions where deemed appropriate. The local school enrolment committee will formally endorse all enrolment decisions to ensure transparency and equity in decision-making.

This Enrolment Policy applies to the four Catholic schools within the Nazareth parish:

St Therese School Catholic Primary School, Torquay; Lisieux Catholic Primary School, Torquay North; Nazareth Catholic Primary School, Grovedale, and St Catherine of Siena, Armstrong Creek

Enrolment applications for Catholic education within the parish boundary are invited before the end of May each year, at which time applications will be assessed centrally against the priority list below. In June each year, prospective students will be invited, with their parents/carers to attend an enrolment interview at the allocated school. Offers of placement will be made to families by the end of Term Two.

## Priority enrolment

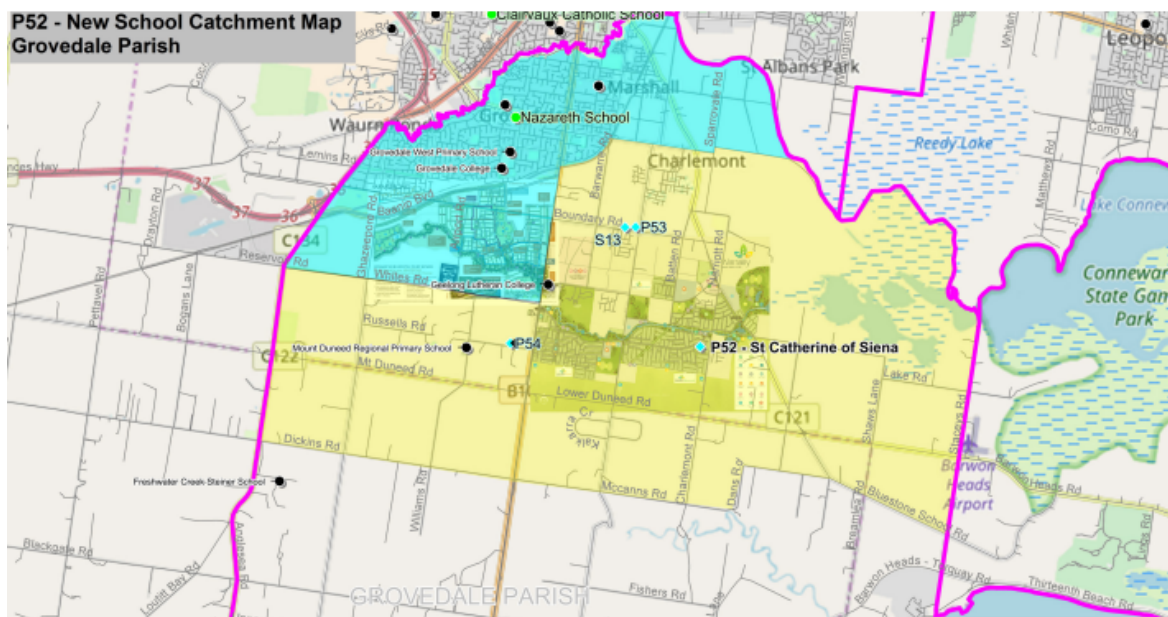
There is an agreed order of priority for enrolment in MACS schools, which must be followed in the enrolment policy and procedures. As systemic Catholic schools, the first priority of Catholic schools is the provision of a Catholic education for Catholic children.

The order of priority for MACS primary schools is:

1. siblings of children already enrolled in the school
2. Catholic children who reside within the Parish catchment areas
3. Catholic children from other parishes (for pastoral reasons)
4. children from non-Catholic Eastern churches (i.e. Greek Orthodox, Coptic Orthodox, Ukrainian Orthodox, Russian Orthodox, Serbian Orthodox and other Orthodox) who reside within the Parish catchment areas
5. other Christian children who reside within the Parish catchment areas
6. non-Christian children who reside within the Parish catchment areas
7. The Parish Priest will consider enrolments from outside the above priority list. (Based on Pastoral reasons).

## Catchment Area

Nazareth Catholic Primary School is located in Grovedale. Our catchment area is in the north-west corridor of the Nazareth Parish.



## Definitions

### Catholic child

For the purpose of enrolment in a Catholic school, a child is considered to be Catholic if they are a member of the Catholic Church, usually established by a Certificate of Baptism.

### Enrolment catchment area

The enrolment catchment area is a defined area from which a school enrolls students as officially designated to a school by MACS. The parish for Nazareth Catholic Primary School is The Nazareth Parish. In parishes with more than one primary school, the catchment for each school is determined by the parish in consultation with MACS.

Enrolment is subject to the maximum capacity of the school.

### **Orthodox child**

For the purpose of enrolment in a Catholic school, a child is considered to be Orthodox if they are a member of a non-Catholic Eastern church, including Greek Orthodox, Coptic Orthodox, Ukrainian Orthodox, Russian Orthodox, Serbian Orthodox and other Orthodox.

### **Parish**

'Parish' refers to the local parish as defined by its geographical boundaries and student location is based on home address.

## **Parental Responsibilities**

At the time of enrolment at Nazareth, parents/guardians/carers make a commitment to provide ongoing support for their child's Catholic education. In particular, parents/guardians/carers are asked to make an explicit commitment to the following responsibilities:

- complete the school's enrolment form and ensure it is returned by the due date. This does not guarantee enrolment in the school
- be prepared to support the school in the Catholic education of their child and involve themselves as much as possible
- acknowledge and commit to meeting the financial responsibilities arising from the ongoing enrolment of their child at Nazareth. Any difficulties in meeting this commitment should be discussed with the principal
- advise the principal of any court order, parenting or custodial arrangement/s that may exist in relation to their child, or any changes to such order/s, and provide a copy of the court order/s and any subsequent changes for the child's school file
- provide the school with an immunisation history statement.

## **Information to Be Collected**

Nazareth is required to collect particular information about parents/guardians/carers and their child. Parents/guardians/carers are required to provide particular information about their child during the enrolment process in order for MACS and the school to meet the duty of care obligations and to satisfy government requirements. Lodging an enrolment form does not guarantee enrolment at Nazareth.

Parents are required to complete the Application for Enrolment form before enrolment into a school can be considered.

The following documentation is required for enrolment:

- Birth certificate
- Baptism certificate
- Immunisation certificate
- Relevant Visa and Passport (if applies)

Enrolment applications forms can be downloaded [here](#).

Please return the enrolment form via email [principal@nsgrovedale.catholic.edu.au](mailto:principal@nsgrovedale.catholic.edu.au)  
or  
send to:

c/o Dena Reddan – Principal  
Nazareth Catholic Primary School  
14-16 Griffith Street  
Grovedale VIC 3216

## Waiting List

In the event of a school in the Parish being unable to offer a place to a Catholic child resident in Nazareth Parish catchment areas, the Parish will make every effort to support enrolment in another school.

Date: June 2021

Next review: June 2024